

FT - TECHNICAL SHEET

Retro-reflective reflector for horizontal signaling of roads

CLASSIFICATION:

According to standard EN 1463-1: 2009 and Test Report No. SCS1001071225:

Declared P3A - Section 4	- P: Permanent use. - 3: Polycarbonate Optics. - A: Not depressible (rigid).
Dimensions - Section 5.2	H2 and HD1
Retro reflectance - Section 5.3.1.1	PRP1
Colorimetric Classification - Section 5.3.2	NCR1

DESCRIPTION:

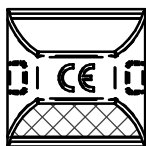
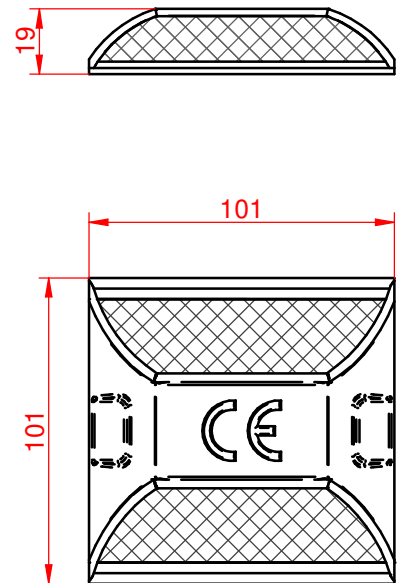
Body injected at high pressure in Polycarbonate reinforced with epoxy mass. Optic made of polycarbonate with high resistance to abrasion and waterproofing guaranteed to dust and water. Base rough with silica sand of minimum granulometry embedded in the dough.

INSTALLATION:

By applying two-component pasty adhesive. 2.5Kg bottle with its powder catalyst sachet. Gray. Suitable for fixing plastic or metal elements in asphalt or concrete substrates. Usage temperature range: between 5°C and 40°C. Ref. CAPTAGUM25.

PACKAGING:

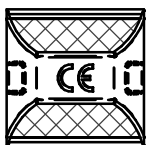
Box: 100 pcs (56x24x23cm) 20.5Kg gros



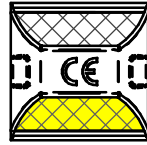
Ref. CAPTAAC01



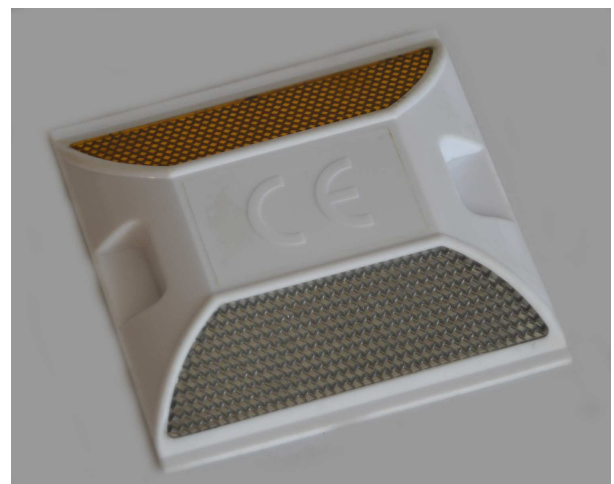
Ref. CAPTAAC02



Ref. CAPTAAC11



Ref. CAPTAAC12



ROADSTUD BASE REFLECTORS

CAPTAAC

A4

Wide-angle optics with the following R1 values:

Input Angle $\beta_2 = \beta_1 = 0^\circ$	0°
Observation Angle	2°
R1 minimum (mcd/lux)	
White optics	1332
Amber optics	636
Red optics	217

27-03-19

1:2.5

SC

FT95

REFLECTORS

SC

señalconfor