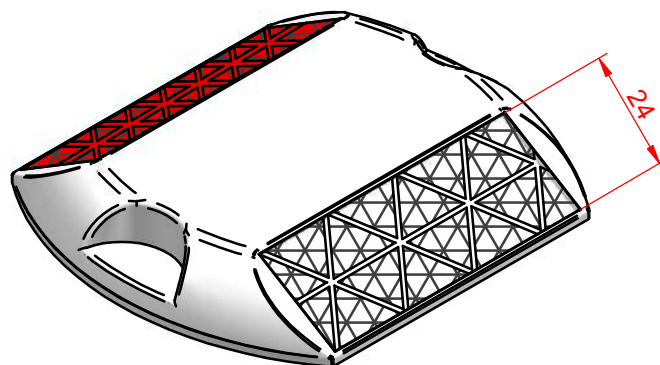
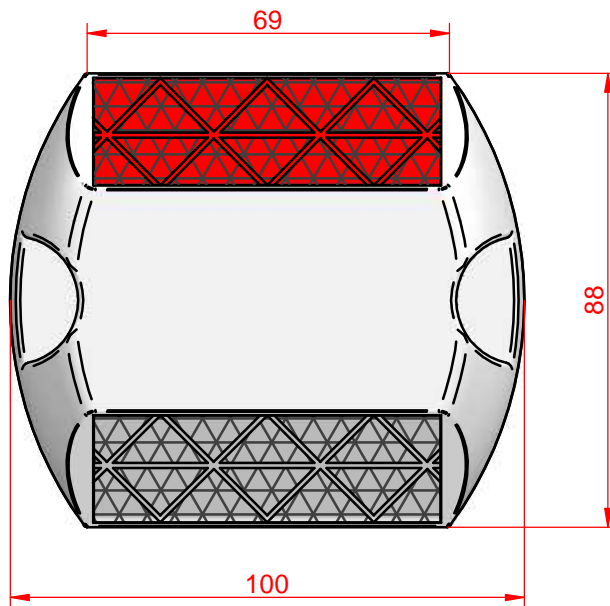
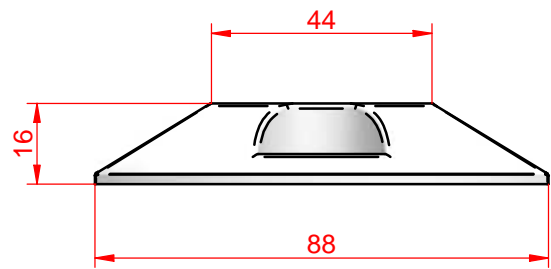
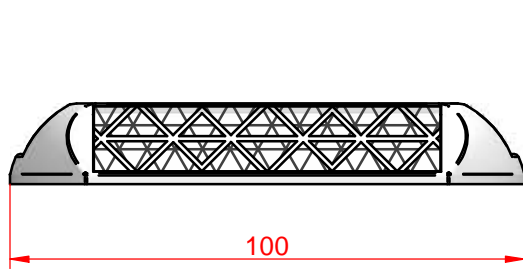


FT - TECHNICAL SHEET



A4	SOIL REFLECTORS (CAT EYE) Reflector for firm fixation with polycarbonate body and high angularity optic. Rigid white or yellow PC housing, resistant to car run over. High adherence rugged base for epoxy adhesives. High scratch resistance optical PMMA. Classified P3A according to EN1463 Standard with reflectance superior to 150 cd.lx1.m2. Marked CE.	04-11-16
1:1.5	Beaconing element in Europe subject to mandatory CE marking.	SC
FT94B	SOIL REFLECTORS (CAT EYE)	<div>SC</div> <div>señalconfor</div>